

Sydney Live Steam Locomotive Society

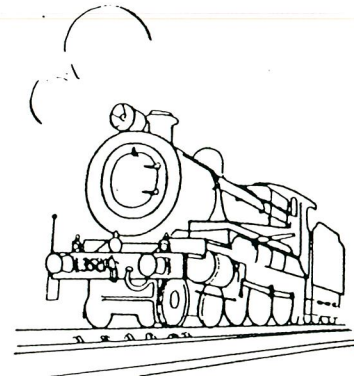
Anthony Road, West Ryde, N.S.W.

Newsletter
Correspondence.
The Editor,
P.O. Box 124,
West Ryde. 2114.
N.S.W.

'Newsletter'

Vol. 20 No. 1

February 1992.



More Signals.

The elevated railway signalling took another (small) step forward on the 9th November with the installation of a relph disc signal as the loop starter. A relph disc is a disc that is rotated by means of a large solenoid. On the disc, which is white, is a red painted arm, that works in the upper quadrant, and the coloured glasses through which the night time indication is given. The signal works from 120v DC and was one of three that existed at St. Marys from the early 1940's to about 12 months ago. The last remaining signals of this type are at Meeks Rd. and will be removed with the resignalling work currently underway in the Sydenham area.

Another glass enclosed banner, this time a wrong road banner, is to be installed on the ground level railway for reverse movements from the inner main platform. This signal was also from St. Marys (ex No. 20) and is operated from 120v AC, although the existing banner on the outer main platform works fine on 24v DC (although a little slower) This signal should be installed by the December running day although its final location should be on the side of the new bridge that will eventually replace the timber bridge over the ground level railway near the platforms.

It is interesting to compare the two glass enclosed electric banners, they have very different cases, and the latest version has mercury contacts, but virtually the same mechanism.

R. Warrick Allison.

Ryde Council Bicentennial.

The proceeds from our March running day will go to the Ryde Council to be allocated to a Charity of their choice. As a Bicentennial event for the Council it is expected that we will have some extra publicity so with a good day we should have a large roll up.

We will need plenty of locomotives on hand as well as members to fully man the grounds. A special effort is needed.

Proposed Members Running Day.

Mike Tyson is to organise a members running day on the Saturday of the Queens Birthday weekend in June.

Starting time 10.00 AM, finish approx. 2.30 PM followed by a Bar b.Q. at the Club House Precincts. (wind and weather permitting.)

Basic load. 4000 lb. on the ground level.
2000 lb. on the elevated.

Distance run 30 miles on ground level (9 trains)
16 miles on the elevated track. (1 train)

More details as they are worked out in the next Newsletter.

New Member.

At the December meeting Peter Lyons was granted full membership of the Society.

Duty Roster.

Mar. '92. B.Peake, W.Allison, J.Leishmann, F.Collins, V.Condon.
Apr. '92. G.Farkas, P.Dunn, M.Tyson, H.Ryan, K.Gapes, K.McMahon.
May '92. W.Richards, T.Geraghty, W.Sandberg, J.Ranford, J.Hagan, H.Spencer, A.Cottrell.
Jun. '92. G.Sharp, B.Kilgour, R.Larkin, J.B.Hurst.

Members are reminded that in the summer months the grass will probably require cutting on more than the second Saturday . With the rain and warm weather it is almost needed twice a week.

The roster is at the moment being revised. There may be some changes to the list published above.

Gate Roster will be notified.

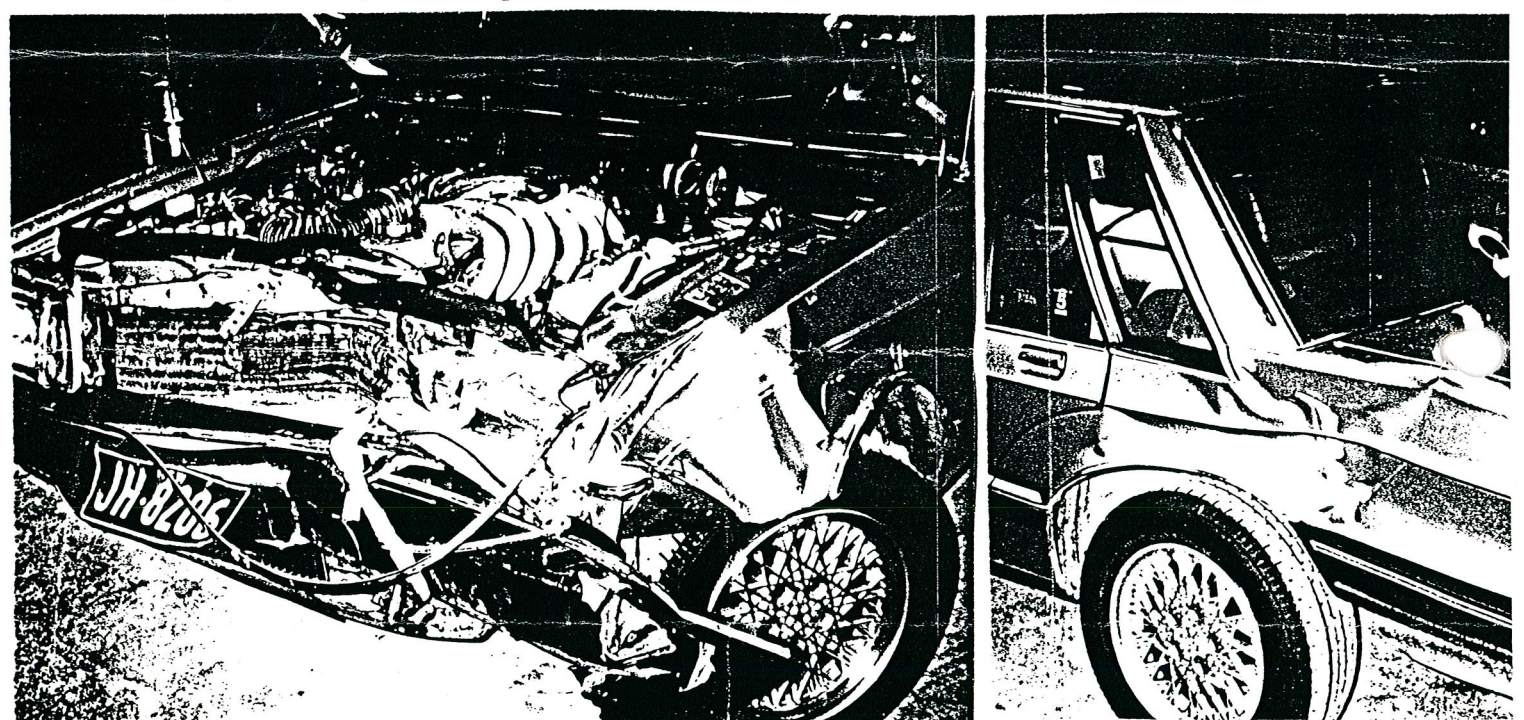
General Items.

The Society was donated fifteen 44 gal. drums of Blair Athol coal by the C.S.I.R.O. It will require sifting and Ron Larkin has arranged for the fines to be collected by the Sydney Technical College.

Following the February running day the outside ground level track will be relocated to allow more clearance from the inner main. It will be ready for the March running day.

Application forms are at hand for the Easter Convention. Contact the Secretary for details.

Cakes..... The canteen ladies are always in need of cakes etc., for our public running days. Try and help.



How John Hurst's car finished up taking our trailer of rubbish to the tip....
Editorial.

Help fill this space.....

Could you provide something for your Newsletter.

John Lyons.